

HUDSON

F U R N I T U R E

NEW YORK CITY

Collection

DINING TABLE



THE GROLIER DINING TABLE

The Grolier dining table is a piece whose top and base can both be customized. Barlas Baylar's inspiration in this bespoke piece stems from natural, organic flora with the branch shapes combined with foundational architectural forms. Available in custom sizes and shapes.

SPECS

108"L x 36"-40"W x 30"H

120"L x 40"-44"W x 30"H



BANGLE DINING TABLE

The Bangle dining table is a contemporary interpretation of Art Deco elements where the rigorous crafting of seamed walnut top and a high polished bronze base are employed in tandem.

SPECS

108"L x 36"-40"W x 30"H

120"L x 40"-44"W x 30"H



ROSE BASE DINING TABLE

The resplendent Rose Base Dining Table comes with a highly polished bronze base, perfectly complemented by a rich, walnut tabletop. The ornate base dances elegantly with the live, organic edges of the walnut, enhancing the natural elements of this phenomenal dining room piece.

SPECS

108"L x 36"-40"W x 30"H

120"L x 40"-44"W x 30"H



HOMMES DINING TABLE

With its artful combination of modern materials, the Hommes Dining Table gives an ornate yet functional touch to your dining room with its walnut top, plexi legs and bronze stretcher structure.

SPECS

108"L x 36"-40"W x 30"H

120"L x 40"-44"W x 30"H



KNIGHT DINING TABLE

The Knight table is made with a single slab of beautiful, organic walnut top, whose highlights are the naturally alive edges and fortuitous grain formations. The base has been sculpted with pure bronze using ancient techniques to highlight the strength and bold character of this design.

SPECS

108"L x 36"-40"W x 30"H
120"L x 40"-44"W x 30"H



O BASE DINING TABLE

The 'O' base dining table is a minimalist piece consisting of a custom metal base, engineered to support the rich walnut top.

SPECS

108"L x 36"-40"W x 30"H

120"L x 40"-44"W x 30"H



MAYSON DINING TABLE

Comprising of a solid, ebonized high gloss table couple with a stump-molded bronze base. The base of the Mayson Table is made from molten bronze that's poured onto a wood mould, replicating every intricate and minute detail and imposing of the stump. Resulting in an organic and artisanal finish. Also available as a dining table.

SPECS

108"L x 36"-40"W x 30"H

120"L x 40"-44"W x 30"H



PLEXI BASE DINING TABLE

The Plexi Dining Table seen here in a rich walnut top full of charm boasting its raw, live edges, supported by a sturdy plexi base. A concept that evokes a sense of floating effortlessly among this living space with the contrast of the walnut slab and the transparent plexi base.

SPECS

108"L x 36"-40"W x 30"H

120"L x 40"-44"W x 30"H



QUATRE DINING TABLE

Named after the number of adjoining legs supporting scintillating masterpiece. The Quatre, as pictures comprised of a Black Lacquer table top, supported by 4 adjoining legs forming a strong and supportive base finished with intricate Statuary bronze finish. The sheer simplicity of the Statuary bronze and decadent black lacquer is one of the many custom finishes Hudson Furniture has to offer.

SPECS

108"L x 38"W x 30"H

120"L x 42"W x 30"H



TROIS DINING TABLE

The Trois table takes its name by the number of feet that forms the base. A triadic structure connected by custom metal crowns, cradling the top and ensuring support and balance to the table.

SPECS

60"D x 30"H



ROUND BANGLE DINING TABLE

The Bangle Dining Table is a contemporary interpretation of Art Deco design inspired by a rigorously crafted, seamed walnut top and high polished bronze base. Available in custom sizes and finishes.

SPECS

60"D x 30"H



MILLE DINING TABLE

A play on concentric circles, the Millé Occasional Table is a refined statement piece to express an innovative and cosmopolitan lifestyle through its elegant and sophisticated character. This table for all occasions features a lacquer-finished composite structure met with a high polished bronze top. Exquisitely embedded circular bronze details also emphasize Millé's modern spirit.

SPECS

108"L x 38"W x 30"H

120"L x 42"W x 30"H



DIPPED DESK

The highly opulent "Dipped Desk" comprises of bronze dripped details against the sumptuous desk, highlighting the contrast between the gleaming polished bronze and organic walnut desk. Available in polished bronze and polished stainless steel finish.

SPECS

60"L x 24"W x 30"H



CLARO WALNUT DINING TABLE

The elongated Claro Walnut table slab boasts its naturally alive edges married with a couple of bronze butterflies as pictured, showcasing its character as a natural, collectible piece that's surely to increase in value as time goes by. Our Claro Walnut is naturally sourced and kiln-dried for approximately 3 years to remove the excess moisture of the wood, ensuring longevity and added value as a collector's piece.

SPECS

108"L x 36"-40"W x 30"H
120"L x 40"-44"W x 30"H

CONSOLE TABLE



STONES CONSOLE

An asymmetric play of solid mass and emptiness, the Stones Console masterfully marries supreme elegance and modern classicism. Consisting of separate hand-crafted high-polished black lacquer & bronze modules, this console renders an artful piece with a timeless appeal.

SPECS

Height: 34" Approx
Width: 18" Approx
Length: 72" Approx



META CREDENZA CONSOLE

Smooth, clean lines of piano black lacquer cradled by cast polished bronze branches, gives us the succulently decadent Meta Credenza. Striking beautiful suspense between the pitch-black lacquer console and lustrous polished bronze branches, this functional objet d'art elevates the ambiance wherever it is placed. Available in walnut and stainless steel finishes.

SPECS

Height: 28" Approx
Width: 20' Approx
Length: 96" Approx



LIPSTICK CONSOLE

The Lipstick Console combines meticulous layers of smooth lines and contrasting elements, combining wood, lacquer, and highly polished bronze. This conceptual design catches the eye effortlessly, with its beautifully serene snapshots that combine color, texture and architecture.

SPECS

Height: 34" Approx
Width: 18" Approx
Length: 72" Approx



SLIDING CONSOLE

An organic, heirloom console made of a solid walnut mass, designed for optimum efficiency, all the while exhibiting its liveliness via the organic walnut grains strewn naturally in the texture.

SPECS

Height: 27" Approx
Width: 20" Approx
Length: 73" Approx



BENOIT CONSOLE

The Benoit, a chic and contemporary table gracefully boasts elegance, with a thick black lacquer top laying effortlessly over thin walnut legs, welded with jeweled statuary bronze details.

SPECS

Height: 34" Approx
Width: 18" Approx
Length: 72" Approx



KNIGHT CONSOLE

A minimalist sculpture, the Knight Console pictured here consists of sturdy stainless steel legs that have been mounted underneath the walnut slab to ensure support throughout the console. The polished stainless steel complements and emphasizes the living, organic edges of the Walnut slab. A timeless, heirloom piece consisting of an elongated, kiln-dried solid walnut slab, ensuring longevity. The Knight base table is supported by cast bronze legs mounted onto the slab, providing strong support for the whole tabletop. The organic grainy texture of the slab, along with the cast bronze legs create a profound serenity in the distinguished guests who are positioned around it. Also available in stainless steel base, light, dark and blackened bronze.

SPECS

Height: 34" Approx

Width: 10-12" Approx

Length: 50" Approx



PLEXI CONSOLE

The Solid Walnut Plexi console at first creates the illusion of a free-floating walnut slab. However, the transparency of the plexi base further foregrounds the live edges of the walnut slab while simultaneously supporting the organic tabletop. The Solid Walnut Plexi console at first creates the illusion of a free-floating walnut slab. However, the transparency of the plexi base further foregrounds the live edges of the walnut slab while simultaneously supporting the organic tabletop.

SPECS

Height: 34-35" Approx
Width: 20" Approx
Length: 92" Approx



ROSE CONSOLE

This intimate piece, inspired by a rose flower, consists of thorny and delicate feet. The Rose console uses a stainless steel bottom mounted throughout the walnut top, ensuring support and balance. The intricate light reflections of the base complement the live edges of the Walnut top. A slim and idyllic console that seamlessly translates into your living space as elegance.

SPECS

Height: 30" Approx
Width: 18" Approx
Length: 74" Approx



THE BLACK ARMOIRE

A pinnacle of the gothic and modern styles, the Black Armoire comprises of varying lengths of black lacquer, meticulously stacked adjacently while achieving a delicate yet stable balance. This piece is finished with a vibrant bronze pendant in the center, resulting in a gorgeous contrast between the lush black color along with the reflective bronze pendant. A collector's piece for those with exquisite taste.

SPECS

Height: 91" Approx
Width: 23" Approx
Length: 43" Approx

SIDE TABLE



LIPSTICK SIDE TABLE

The Lipstick Side Table combines meticulous layers of smooth lines and contrasting elements, like wood, lacquer and highly polished bronze. The concept catches the eye effortlessly, with its beautiful and calm snapshots of color, texture and architecture.

SPECS

Height: 20" Approx
Width: 18" Approx
Length: 18" Approx



FLEUR SIDE TABLE

A two-tiered side table consisting of a high gloss black lacquer base and high glossed walnut top. Held together by a solid polished bronze spine, welded to provide support. The color contrasts result in an harmonious synergy.

SPECS

Height: 20" Approx
Width: 18" Approx
Length: 20" Approx



MILLE 1&2 SIDE TABLE

Architecturally designed to showcase its striated surface and fluid structure, the Mille 1 and 2 are built in high gloss black lacquer with an elegant finish with lustrous bronze details.

Mille 1: Pictured with a bronze top and a fluid structure.

Mille 2: Pictured with a black lacquer top and a striated structure.

SPECS

Height: 20" Approx

Width: 18" Approx

Length: 24" Approx



MAYSON 2 SIDE TABLE

An Art nouveau-influenced piece, consisting of solid bronze set that amplifies the aesthetics of the linear nature of the walnut trunk. A spectacular fusion of modernism and nature.

SPECS

Height: 16" Approx
Width: 19" Approx
Length: 34" Approx



THE ROCK SIDE TABLE

An exceptional piece that hosts both art nouveau and art deco design elements. The bronze rock exemplifies its array of textures, ranging from the smooth polished bronze, to the ragged craters. The sheer simplicity of the rock ensures an adaptability to any living space

SPECS

Height: 16,5" Approx
Width: 17,5" Approx
Length: 17,5" Approx

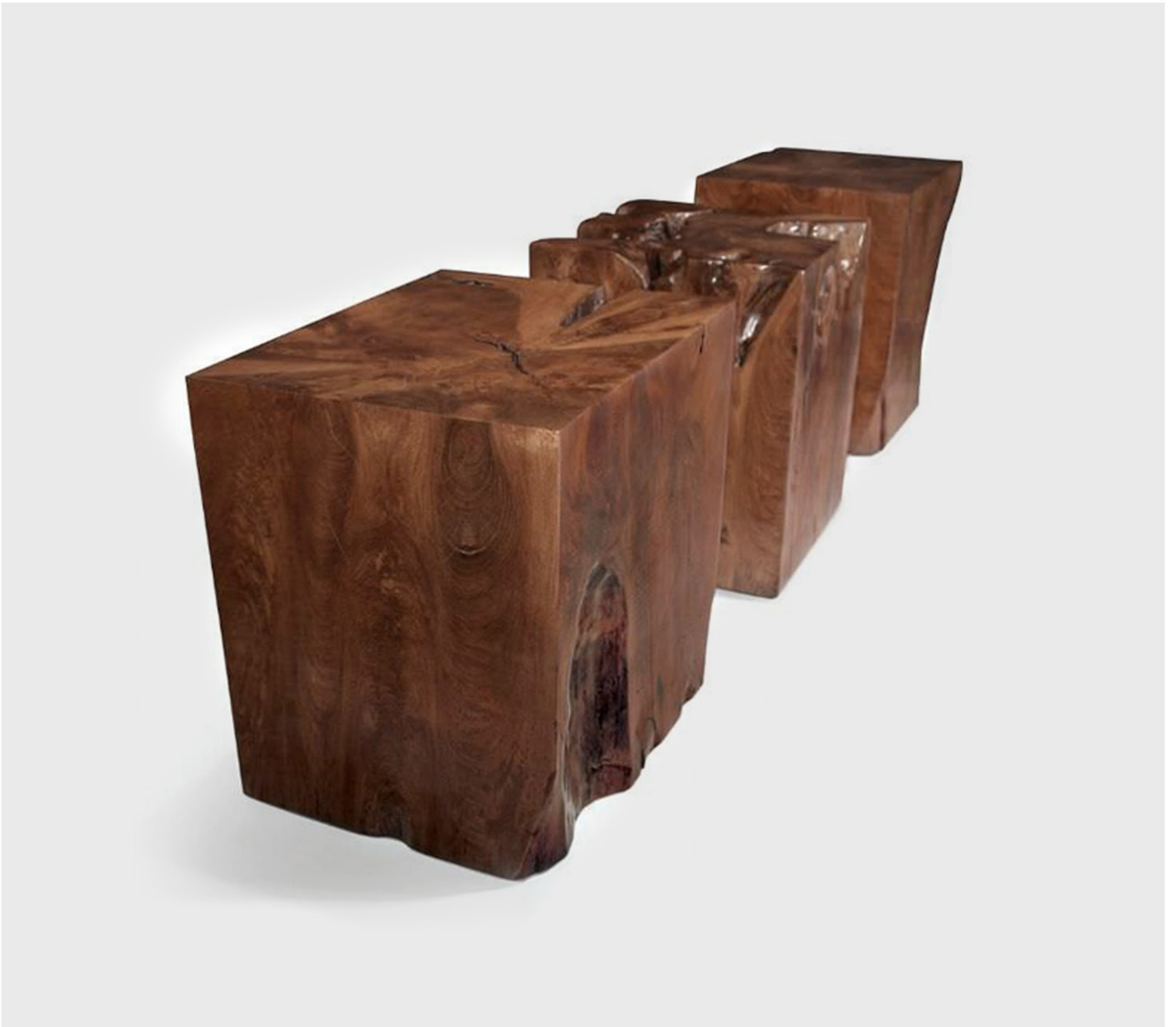


MAYSON 1 SIDE TABLE

An Art nouveau-influenced piece, consisting of solid bronze to amplify the aesthetics of the linear nature of the Walnut trunk. A spectacular fusion of modernism and nature.

SPECS

Height: 16" Approx
Dia: 34" Approx



ORGANIC TEAK CUBE SIDE TABLE

Nature is the best designer, and our Organic Teak Cubes, a selection of ethically sourced, unique pieces perfectly epitomize this fact.

SPECS

Height: 18" Approx
Width: 18" Approx
Length: 18" Approx



PETRIFIED WOOD SIDE TABLE

Nature is the best designer, and our Petrified Wood selection perfectly epitomizes that. Aged for approximately a few million years, the Petrified Wood has emerged as a Hudson exclusive, by eliciting a honed, marbled aesthetics, simultaneously maintaining its natural fossilized form.

SPECS

Height: 18,5" Approx
Width: 15" Approx
Length: 17" Approx

COFFEE TABLE



PIERRE COFFEE TABLE

A timeless design, the Pierre Coffee Table consists of a H9 Wood top that resembles an artist's palette, carefully placed over a sumptuous polished bronze/ stainless steel and black lacquer base. Resulting in a harmonious culmination of colors, textures, and finishes, the Pierre elicits a modern twist to an art deco classic. Available in Stainless Steel and Polished bronze.

SPECS

Height: 16" Approx
Width: 44" Approx
Depth: 66" Approx



GRID COFFEE TABLE

A namesake piece, the Grid Coffee Table consists of a thick, walnut top, supported by grids of stainless/bronze plates strategically maneuvered to ensure support. This is further supported by a base of a thin sheet of stainless steel/bronze, followed by a thick walnut base, resulting in a sculptural masterpiece that seamlessly adapts to any surroundings. Available in either bronze or stainless steel options.

SPECS

Height: 16" Approx
Width: 64" Approx
Length: 56" Approx



BIARRITZ COFFEE TABLE

Architecturally designed to maintain constant support throughout the table, whilst maintaining its profound beauty, the Biarritz Coffee table showcases its palette of colors, ranging from the rich black lacquer, H9 Wood top, intricate polished bronze details, complete with a sturdy bronze base. Available in stainless steel and polished bronze.

SPECS

Height: 16" Approx
Width: 55" Approx
Length: 66" Approx



ABSTRACT COFFEE TABLE

A contemporary masterpiece that consists of uniquely placed wood species, embedded with fine stainless steel butterflies and details.

SPECS

Height: 15" Approx
Width: 42" Approx
Length: 48" Approx



LA GRAVITE COFFEE TABLE

Focusing solely on architectural precision to obtain an overall balance, La Gravite table consists of a parchment table top balanced on a thick, sturdy blackened plate of stainless steel. Available in polished and blackened finishes.

SPECS

Height: 16" Approx
Width: 44" Approx
Depth: 79" Approx



JUDD COFFEE TABLE

An idyllic sculptural piece of glossed walnut complemented by the polished bronze base. The sheer minimalism of the table emphasizes the visible grains of the slab, resulting in an aesthetically soothing table. The inclusion of the compartments further elicits a dual functionality.

SPECS

Height: 16" Approx
Width: 40" Approx
Length: 66" Approx



ELEMENT 1&2 COFFEE TABLE

Focusing solely on architectural precision to obtain an overall balance, La Gravite table consists of a parchment table top balanced on a thick, sturdy blackened plate of stainless steel. Available in polished and blackened finishes.

SPECS

Element 1 - Surface Area: 31x18" Approx
Height: 20" Approx
Width: 27" Approx
Length: 60" Approx

Element 2 - Surface Area: 20x11" Approx
Height: 16" Approx
Width: 22" Approx
Length: 32" Approx



PLEXI BASE COFFEE TABLE

The elegantly poised Plexi Coffee Table is carved out of a continuous slab of Walnut, with the addition of a plexi leg, further supporting this organic structure. The transparency of the plexi leg further emphasizes the live edges and organic nature of the Plexi Coffee Table.

SPECS

Height: 16" Approx
Width: 32-36" Approx
Length: 60" Approx



LIVE EDGE COFFEE TABLE

A narrative piece, where each live edge, grain, crotches and color narrates a harmonious story. The naturally intricate details on each piece can never be replicated.

SPECS

Height: 14" Approx
Width: 36-40" Approx
Length: 60" Approx

DINING CHAIR



PASCAL DINING CHAIR

The sophisticated Pascal Chair carries with it, nostalgic elements of the Art Deco era; a beguiling experience of comfort and luxury. The upholstery can be made with a selection of exquisite fabrics, combined with the beautiful base and legs crafted of smooth black lacquer with elements of highly polished bronze.

SPECS

Height: 30" Approx

Width: 24" Approx

Depth: 22" Approx

Seat Height: 18" Approx

Seat Depth: 21.5" Approx

Seat Width: 22" Approx

Arm Height: 26" Approx



SOPHIEL DINING CHAIR

A svelte bronze frame, complete with woven leather upholstery. The Sophiel effortlessly charms you with its juxtaposed nature, starting from its woven leather upholstery, finally complemented by a smooth polished bronze frame.

SPECS

Height: 27" Approx
Width: 24" Approx
Depth: 27" Approx



CLIVE DINING CHAIR

The Clive Chair pictured here consists of textured brown leather upholstery fitted on a polished bronze frame. The polished bronze finish on the chair coupled with the bold brown leather radiates a sense of elegance and panache.

SPECS

Height: 32" Approx
Width: 20.25" Approx
Depth: 19.75" Approx



MIKA DINING CHAIR

The Mika Chairs, pictured here consists of a polished bronze frame, finished with brown woven leather upholstery. The light reflection of the bronze frame highlights the woven details of the leather. The Mika 2 Chair, pictured here consist of a darkened bronze frame, finished with brown woven leather upholstery. The contrast between the darkened bronze frame complements the knitted leather.

SPECS

Height: 34" Approx

Width: 24" Approx

Depth: 24" Approx

Seat Height: 18" Approx

Seat Depth: 20.5" Approx

Seat Width: 20.5" Approx

Arm Height: 24" Approx



BLADE DINING CHAIR

The Blade achieves optimum balance whilst maintaining a compelling aesthetic appeal. Sporting a decadent black lacquer body, supported by a custom bronze stand and encased in custom woolen fabrics, The Blade, this astounding dining chair, celebrates a myriad of textures, materials, and colors. Available in custom sizes & finishes.

SPECS

Height: 32" Approx
Width: 21" Approx
Depth: 25" Approx



ROCCO DINING CHAIR

The Rocco adopts a ruggedly handsome saddle rack body, complemented with a smooth leather headrest and polished bronze spine.

SPECS

Height: 30" Approx
Width: 23" Approx
Depth: 28" Approx



COLT DINING CHAIR

The Colt Chair pictured here consists of an organic walnut structure, bronze caps, and finished with a beige fabric. The similarities in the beige and brown create a synergy for the colt chairs. Available in Custom Fabrics.

SPECS

Height: 32" Approx
Width: 20" Approx
Depth: 23" Approx



EATON DINING CHAIR

The Eaton Chair pictured here consists of a walnut frame, finished with a green COM fabric. The Eaton Chair is renowned for its minimalism, as the principal designer converts an ordinary lumber of walnut into a scintillating masterpiece. Available in custom finishes.

SPECS

Height: 32" Approx

Width: 20" Approx

Depth: 20.5" Approx

Seat Height: 19" Approx



DIPPED BAR STOOL

The dipped barstool comprises of Art Nouveau techniques of a Walnut barstool complete with a dipped bronze effect and welded together by a polished bronze stretcher. A minimalist piece with a touch of flamboyance.

SPECS

Height: 30" Approx
Width: 18" Approx
Depth: 18" Approx



DIPPED STOOL

The dipped barstool comprises of Art Nouveau techniques of a Walnut barstool complete with a dipped bronze effect and welded together by a polished bronze stretcher. A minimalist piece with a touch of flamboyance.

SPECS

Height: 18" Approx
Width: 18" Approx
Depth: 18" Approx



COLT BAR STOOL

The Colt Chair pictured here consists of an organic walnut base with a bronze cap, finished with a beige fabric. The similarity in the tone of the beige and brown create an unparalleled synergy for these pieces.

SPECS

Height: 44" Approx
Width: 18" Approx
Depth: 21" Approx
Seat Height: 30" Approx
Seat Width : 18" Approx
Seat Depth: 17,5" Approx

UPHOLSTERY



PIERRE SOFA

The Pierre Sofa pictured here consists of a high-gloss H9 Base, topped with a COM fabric and an intrinsic bronze base. Spanning approximately 10ft, the Pierre Sofa bespoke ultimate comfort with its plush and inviting fabric.

SPECS

Height: 28" Approx
Depth: 40" Approx
Length: 120" Approx
Seat Height: 17" Approx
Seat Depth: 25" Approx



PIERRE CLUB CHAIR

The Pierre Club Chair as a picture consists of a High-gloss H9 Base, topped with a COM Fabric and intrinsic bronze base. Spanning at approximately 3ft, the Pierre Club Chair bespoke comfort.

SPECS

Height: 28" Approx
Depth: 45" Approx
Length: 37" Approx
Seat Height: 17" Approx
Seat Depth: 25" Approx



PIERRE DAYBED

The Pierre Daybed as a picture consists of a High-gloss H9 Base, topped with a COM Fabric and intrinsic bronze base. Spanning at approximately 10ft, the Pierre daybed spells comfort.

SPECS

Height: 28" Approx
Depth: 33" Approx
Length: 120" Approx
Seat Height: 17" Approx
Seat Depth: 25" Approx



PIERRE OTTOMAN CHAIR

The Pierre Ottoman Chairs pictured here consists of a High-gloss H9 Base, topped with a COM Fabric and intrinsic bronze base. Spanning at approximately 37", the Pierre Ottoman Chair bespoke comfort.

SPECS

Height: 17" Approx
Depth: 28" Approx
Width: 37" Approx



MAL SOFA

Facets of varied ebonized walnut, comprising of various textures that span approximately 9' complete with our renowned upholstery and polished stainless steel feet.

SPECS

Height: 28" Approx
Depth: 37" Approx
Length: 112" Approx
Seat Height: 17" Approx
Seat Depth: 27" Approx



MAL CLUB CHAIR

Ebonized faceted tetris of walnut planks create an illustrious piece, seen here paired with a COM fabric and polished stainless steel caps.

SPECS

Height: 28" Approx

Depth: 37" Approx

Length: 45" Approx

Seat Height: 17" Approx

Seat Depth: 25" Approx



DIVAN SOFA

The Divan Sofa embodies a solid walnut frame, complete with bronze feet along with a custom beige COM. The minimalist nature of the Divan Sofa allows itself to complement any fabric colour that the customer may choose, as it seamlessly adapts itself.

SPECS

Height: 28" Approx
Depth: 37,5" Approx
Length: 120" Approx
Seat Height: 15" Approx
Seat Depth: 29" Approx



DIVAN CLUB CHAIR

The Divan Club Chair embodies a solid Walnut frame, completed with bronze feet along with a beige Customer Owner fabric. The minimalist nature of the Divan Club Chair allows itself to complement any fabric colour that the customer may choose, as it seamlessly adapts itself.

SPECS

Height: 28" Approx
Depth: 37,5" Approx
Length: 45" Approx
Seat Height: 16" Approx
Seat Depth: 29" Approx



COTE SOFA

The Cote Sofa spans approximately 10 ft. wide, consisting of black lacquer, COM Leather, and finished with bronze feet and details.

SPECS

Height: 25.5" Approx

Depth: 41" Approx

Length: 120" Approx

Seat Height: 17" Approx

Seat Depth: 24.5" Approx



COTE CLUB CHAIR

The Cote Arm Chair adopts a powerful black lacquer frame, upholstered with a COM grey fabric and completed with polished bronze crowns.

SPECS

Height: Approx 25.5"

Depth: Approx 41"

Length: Approx 56"

Seat Height: Approx 17"

Seat Depth: Approx 24.5"



PARC SOFA

A 3 Seater sofa comprising of %100 linen upholstery, supported by an elongated walnut base, inheriting an art deco method of implementing straight lines to its piece.

SPECS

Height: 33" Approx
Depth: 36" Approx
Length: 132" Approx
Seat Height: 17,5" Approx
Arm Height: 26.5" Approx
Seat Depth: 23" Approx



PARC CLUB CHAIR

A 3 Seater Parc Club Chair comprising of %100 linen upholstery, supported by an elongated walnut base, inheriting an art deco method of implementing straight lines to its piece.

SPECS

Height: 33" Approx
Depth: 36" Approx
Length: 50" Approx
Seat Height: 17,5" Approx
Arm Height: 26.5" Approx
Seat Depth: 23" Approx

BENCH



DIPPED BENCH

The Dipped Bench reflects the balance of precision and sophistication along with high-polished bronze dipped feet complementing the solid walnut legs. Custom sizes and finishes are available.

SPECS

Height: 17" Approx
Width: 18" Approx
Length: 60" Approx



PLEXI TATE BENCH

The elegantly poised Plexi Tate Bench is carved out of a continuous slab of walnut, with the addition of a plexi leg that supports this organic structure. The transparent nature of the plexi leg further emphasizes the contrast with the live edges and organic nature of the plexi tate bench.

SPECS

Height: 17" Approx
Width: 18" Approx
Length: 60" Approx

BED



HUDSON SIGNATURE

The Hudson Signature Bed employs a live edge headboard, walnut planks and drawers. Designed for optimum comfort while maintaining its organic beauty.

SPECS

Custom Sizes Available
Shown as King Size



MARQUIS SIGNATURE

A collection of various seamed planks of walnut, complemented with a sheet of polished bronze as a headboard, whose reflective and incandescent nature contrast with the granular, rough, live edges of the bed. The bed consists of planks of walnut lumber held together by bronze butterflies, ensuring strength and safety.

SPECS

Custom Sizes Available
Shown as King Size

MIRROR



BRONZE CONVEX MIRROR

The Bronze Convex mirror consists of a solid Bronze frame covering the convex mirror lens. The bronze color bodes well with the convex nature of the glass pane. Available in a flat version.

SPECS

Dia: 36" Approx
Depth: 3" Approx



METEOR MIRROR

The jagged, polished, stainless steel base is complemented by the smooth crimson-red linen shade, resulting in a beautiful synergy between the contrasting colors and textures.

SPECS

Dia: 60" Approx
Depth: 5" Approx

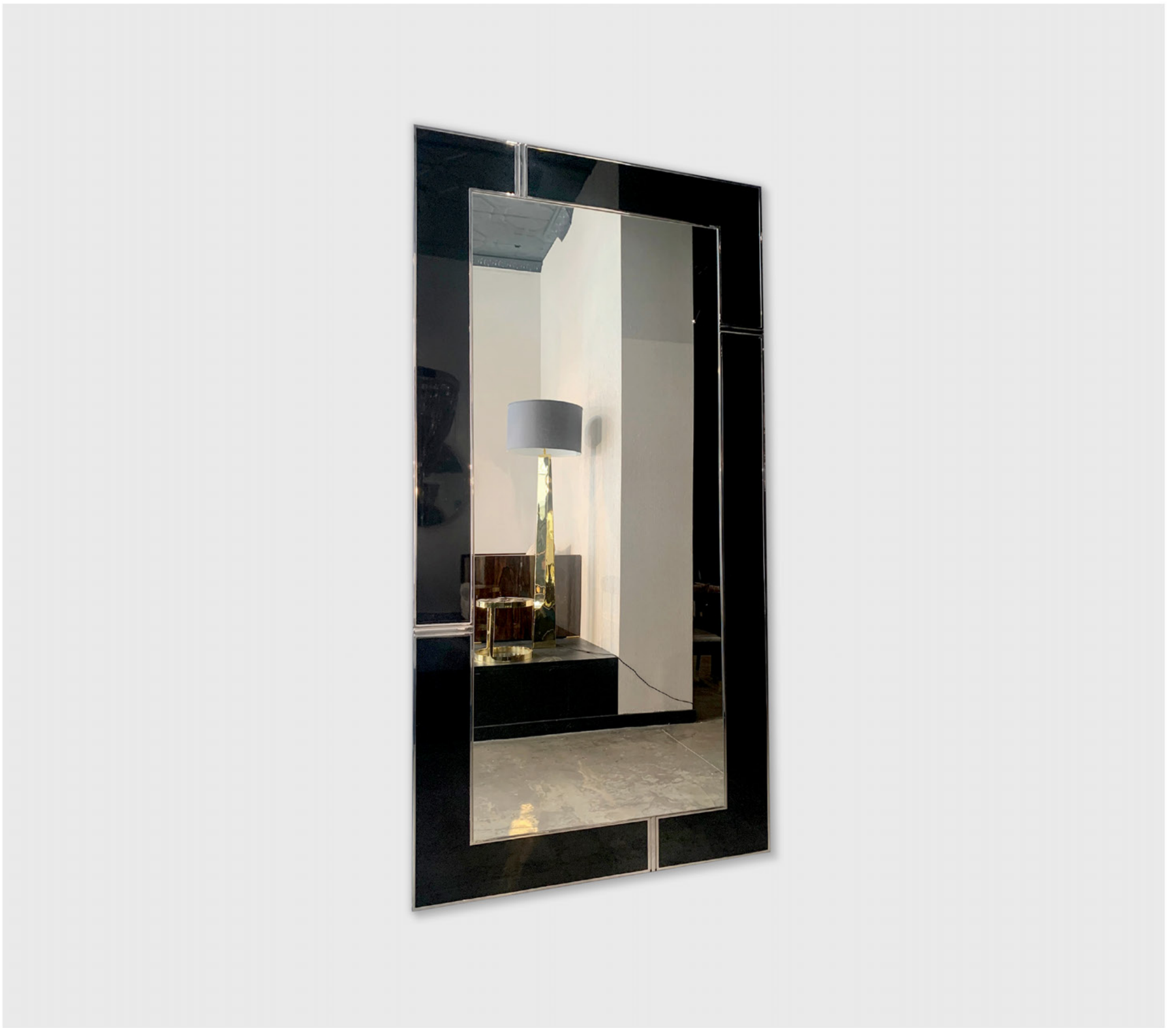


ENIGMA MIRROR

Seamed walnut lumber, engineered to produce the enigma mirror. The culmination of the walnut lumber and the plain design of the mirror creates an enchanting contrast of the organic and the contemporary.

SPECS

Height: 48" Approx
Width: 84" Approx
Depth: 4" Approx



DECO MIRROR

Symmetrical and repetitive angular designs similar to zig-zags made of lacquer and statuary bronze, the Deco Lamp is a classic example of the Art Deco era of design, from the 1920s and 1930s.

SPECS

Height: 107" Approx
Width: 55" Approx
Depth: 2" Approx

CEILING LIGHT



BRANCH D'OR CHANDELIER

Introducing you to our first 2023 design, The Branch D'or Chandelier. A namesake, organic piece instigated by Barlas Baylar. The Branch D'or embraces a sturdy plexi acrylic glass branch with alternating tinges of bronze, complete with custom bronze clasps. Barlas' inspiration stems from the fragility of nature, thus the Branch D'or is a testament to the greatest designer of them all, mother nature.

SPECS

107"L x 8"W x 10"H Approx
84"L x 6.5"W x 8"H Approx
72"L x 5.5"W x 7"H Approx



FALCON CHANDELIER

Designed by Barlas Baylar, the Falcon is an uncompromising representation of superior craftsmanship with hand-blown globe glass and solid polished bronze details that complement this exquisite piece. Available in a variety of finishes and custom sizes.

SPECS

Height: 25" Approx
Length: 78" Approx
Depth: 57" Approx



VALIANT HORIZONTAL CHANDELIER

Celebrate the exclusive meta-luxury of a pioneer in lighting fixtures with this illuminating artwork. Designed by Barlas Baylar, The Valiant Chandelier is an uncompromising representation of superior craftsmanship with hand-blown Murano glass lamps and solid polished bronze details that complement this exquisite work. Available in Bronze, Stainless Steel and as Sconce.

SPECS

Height: 38" Approx
Width: 22" Approx
Length: 108" Approx



VALIANT VERTICAL CHANDELIER

Celebrate the exclusive meta-luxury of a pioneer in lighting fixtures with this illuminating artwork. Designed by Barlas Baylar, The Valiant Chandelier is an uncompromising representation of superior craftsmanship with hand-blown Murano glass lamps and solid polished bronze details that complement this exquisite work. Available in Bronze, Stainless Steel and as Sconce.

SPECS

Height: 53" Approx
Dia: 36" Approx



VALIANT NO.8 CHANDELIER

Designed by Barlas Baylar, the Valiant No.8 is an uncompromising representation of superior craftsmanship with hand-blown globe glass and solid polished bronze details that complement this exquisite piece. Available in a variety of finishes and custom sizes.

SPECS

Height: 19" Approx
Width: 23" Approx
Depth: 12" Approx



VALIANT NO.9 CHANDELIER

Designed by Barlas Baylar, the Valiant No.9 is an uncompromising representation of superior craftsmanship with hand-blown globe glass and solid polished bronze details which complement this exquisite piece. Available in a variety of finishes and custom sizes.

SPECS

Height: 30" Approx
Width: 29" Approx
Depth: 22" Approx



VALIANT NO.10 CHANDELIER

Designed by Barlas Baylar, the Valiant No.10 is an uncompromising representation of superior craftsmanship with hand-blown globe glass and solid polished bronze details which complement this exquisite piece. Available in a variety of finishes and custom sizes.

SPECS

Height: 19" Approx
Width: 37" Approx
Depth: 14" Approx



GAIA CHANDELIER

Gaia is not simply a chandelier; it is a testament to the Goddess of Natural World. The Gaia seamlessly merges different shaped, sized glass and bronze, each carefully chosen to evoke a sense of wonder and mystique. From delicate spheres to abstract forms. A symphony of shimmering polished bronze elements enhances the transcendent radiance of Gaia. Different dimensions & finishes available.

SPECS

Small 22" Dia H:25"

Medium 34" Dia x 39" H

Large 48" Dia x H:53



MAGNOLIA VERTICAL CHANDELIER

The Magnolia Chandelier, one of many countless design set to make its debut this year. Inspired by his Mother Manolya, the Magnolia Chandelier is a testament piece to her. Comprising of various plexi panels and bronze filaments, portraying the resplendent characteristic of the Magnolia Flower.

SPECS

Height: 55" Approx

Width: 35" Approx

Length: 38" Approx



BOUCHON CHANDELIER

A chain of interlocked circular pendants made of solid bronze paired with contoured hand-blown Murano glass. The Bouchon is almost magical, for the lack of a better word, creating an illusion of suspension of the interlinked pendants in mid-air when illuminated.

SPECS

Height: 49" Approx
Width: 36" Approx
Length: 115" Approx



BRITANNICA HORIZONTAL CHANDELIER

A combination of magnificent proportions, consisting of a superior demonstration of craftsmanship that combines glass shards, hand-blown and carved, angular Murano glass globes, topped with a delicious bronze honeycomb design. A lighting masterpiece that boasts a myriad of varying incandescent reflections, set to uplift the ambiance of any surroundings it is placed in.

SPECS

Height: 53" Approx
Width: 40" Approx
Length: 108" Approx



BRITANNICA VERTICAL CHANDELIER

A combination of magnificent proportions, consisting of a superior demonstration of craftsmanship that combines glass shards, hand-blown and carved, angular Murano glass globes, topped with a delicious bronze honeycomb design. A lighting masterpiece that boasts a myriad of varying incandescent reflections, set to uplift the ambiance of any surroundings it is placed in.

SPECS

Height: 72" Approx
Dia: 40" Approx



BRITANNICA OVAL CHANDELIER

A combination of magnificent proportions, consisting of a superior demonstration of craftsmanship that combines glass shards, hand-blown and carved, angular Murano glass globes, topped with a delicious bronze honeycomb design. A lighting masterpiece that boasts a myriad of varying incandescent reflections, set to uplift the ambiance of any surroundings it is placed in.

SPECS

Height: 42" Approx
Dia: 36" Approx



TUSK CHANDELIER

With the sheer pulchritude stemming from a minimalist nature, the Tusk chandelier is characterized by sharp, angular and faceted tips. Architecturally designed to ensure the reflection of an optimized level of light, this heirloom chandelier will add a unique sense of panache to your living space.

SPECS

Height: 30" Approx
Dia: 36" Approx



AURORA CHANDELIER

Aurora consists of a mélange of geometric pendants of varying proportions, combined to form a fluid, interlocked sculpture. Available in bronze and stainless steel.

SPECS

Height: 60" Approx
Width: 21" Approx
Length: 36" Approx



PANGEA CHANDELIER

Derived from the prehistoric supercontinent of the planet Earth, The Pangea Chandelier comprises of a surreal, horizontal layout of numerous interlocked geometrical, organic, circular pendants welded to form a seamless design, resulting in a bold and powerful, exquisitely unique work of art. Once lit, the fixture brings to life the intriguing natural live edges of this piece.

SPECS

Height: 18" Approx
Width: 23" Approx
Length: 107" Approx



LA CAGE HORIZONTAL CHANDELIER

The La Cage is the expansion of five, concentric, abstract rings hanging in fluid suspension, representing the Big Bang in a snap shot with an abundance of light to complement the design. Exploring varying, almost random, geometric shapes in order to create a fluid, interlocking sculpture that summons light at the inception of all things, the design of the La Cage Chandelier has been described as sublime, majestic, ethereal, otherworldly, fantastic – all envisaged through the designer's unique view of the world. The will to power and scale of each design reflects the designer's desire to employ density, depth, tactile beauty with an ingenuity of highly finished treatment of each sculpted piece.

SPECS

Height: 42" Approx
Width: 38" Approx
Length: 72" Approx



LA CAGE VERTICAL CHANDELIER

The La Cage is the expansion of five, concentric, abstract rings hanging in fluid suspension, representing the Big Bang in a snapshot with an abundance of light to complement the design. Exploring varying, almost random, geometric shapes in order to create a fluid, interlocking sculpture that summons light at the inception of all things, the design of the La Cage Chandelier has been described as sublime, majestic, ethereal, otherworldly, fantastic – all aptly describing the designer's unique view of the world. The will to power and scale displayed in each design reflects the designer's desire to employ density, depth, and tactile beauty, marked with an ingenuity of highly finished treatment of each sculpted piece.

SPECS

Height: 40" Approx
Dia: 30" Approx



DRAGON CHANDELIER

Inspired by the winged Ancalagon in Lord of the Rings, specifically the dragon bred by Morgoth during the First Age, and believed to have been the largest dragon ever to have set foot on Middle Earth. This powerful chandelier comprises of approximately 3 miles of chain, draped elegantly on a sturdy stainless steel frame, symbolizing a dragon wearing jewelry; in the fictional world where the inspiration of the piece is from, the jewelry worn by the dragon was renowned for its magical properties.

SPECS

Height: 45" Approx
Width: 15" Approx
Length: 100" Approx



PANTHEON CHANDELIER

A masterpiece of expressionism that adopts the quintessential Hudson trademark of a solid frame draped with approximately 4 miles of handmade nickel chains. The nickel chains embellish the light they reflect resulting in a soothing ambiance, replicating the characteristics of an illuminated birds nest in abstract.

SPECS

Height: 48" Approx
Width: 28" Approx
Length: 107" Approx



MOTHER CHANDELIER

A minimalist sculpture with filigree that dances with poise and bravado, and decorated with handmade organic chains elegantly fastened to form a bold sculpture. The Mother Chandelier features approximately 3 miles of faceted, jeweled chains draped individually over the stainless steel frame. The Mother Chandelier series is a design in which fashion and elegance meet function. Available in Bronze and Stainless steel.

SPECS

Mother V (3 Rings)
Length: 36" Approx
Width: 27" Approx
Height: 50"-60" Approx

SPECS

Mother IV (1 Ring)
Dia: 36" Approx
Height: 40"-50" Approx



SPIDER CHANDELIER

The dynamic Spider Chandelier drips with panache. This unique lamp consists of 4 shades, held together by a sturdy, masculine walnut frame ensuring the fixtures' stability. Topped with bronze tips and available in a complete walnut or bronze frame.

SPECS

Height: 20" Approx
Width: 47" Approx
Length: 94" Approx

FLOOR LAMP



LIBERTE FLOOR LAMP

The Liberté stems from the re-emergence of 1960's influenced design, made with polished bronze and a white linen shade. An intimate and adaptive fixture, the Liberté is set to infuse a sense of modernism into your living space.

SPECS

Height: 79" Approx
Dia: 28" Approx



META FLOOR LAMP

The Meta is constructed out of golden branches arranged and fastened into a conical frame. The lampshade is made out of solid bronze to increase the sense of space by reflecting ample light into its surroundings.

SPECS

Height: 84" Approx

Dia: 38" Approx

TABLE LAMP



LIBERTE TABLE LAMP

The Liberté stems from the re-emergence of 1960's influenced design, made with polished bronze and a white linen shade. An intimate and adaptive fixture, the Liberté is set to infuse a sense of modernism into your living space.

SPECS

Height: 46.5" Approx

Dia: 24" Approx

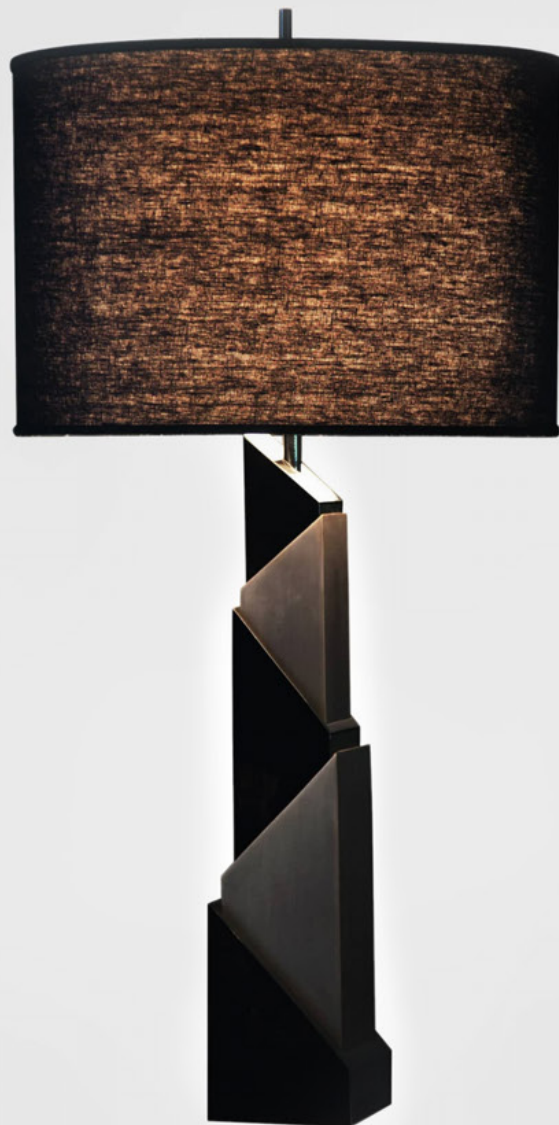


METEOR TABLE LAMP

The jagged polished stainless steel base complements the smooth crimson red linen shade. Resulting in a beautiful synergy between the contrasting colours and textures.

SPECS

Height: 44" Approx
Dia: 24" Approx



DECO TABLE LAMP

Symmetrical and repeating angular designs like zig-zags made of lacquer and statuary bronze, Deco Lamp is a classic example of Art Deco era design from 1920s and 1930s.

SPECS

Height: 44" Approx
Dia: 24" Approx

WALL LIGHT

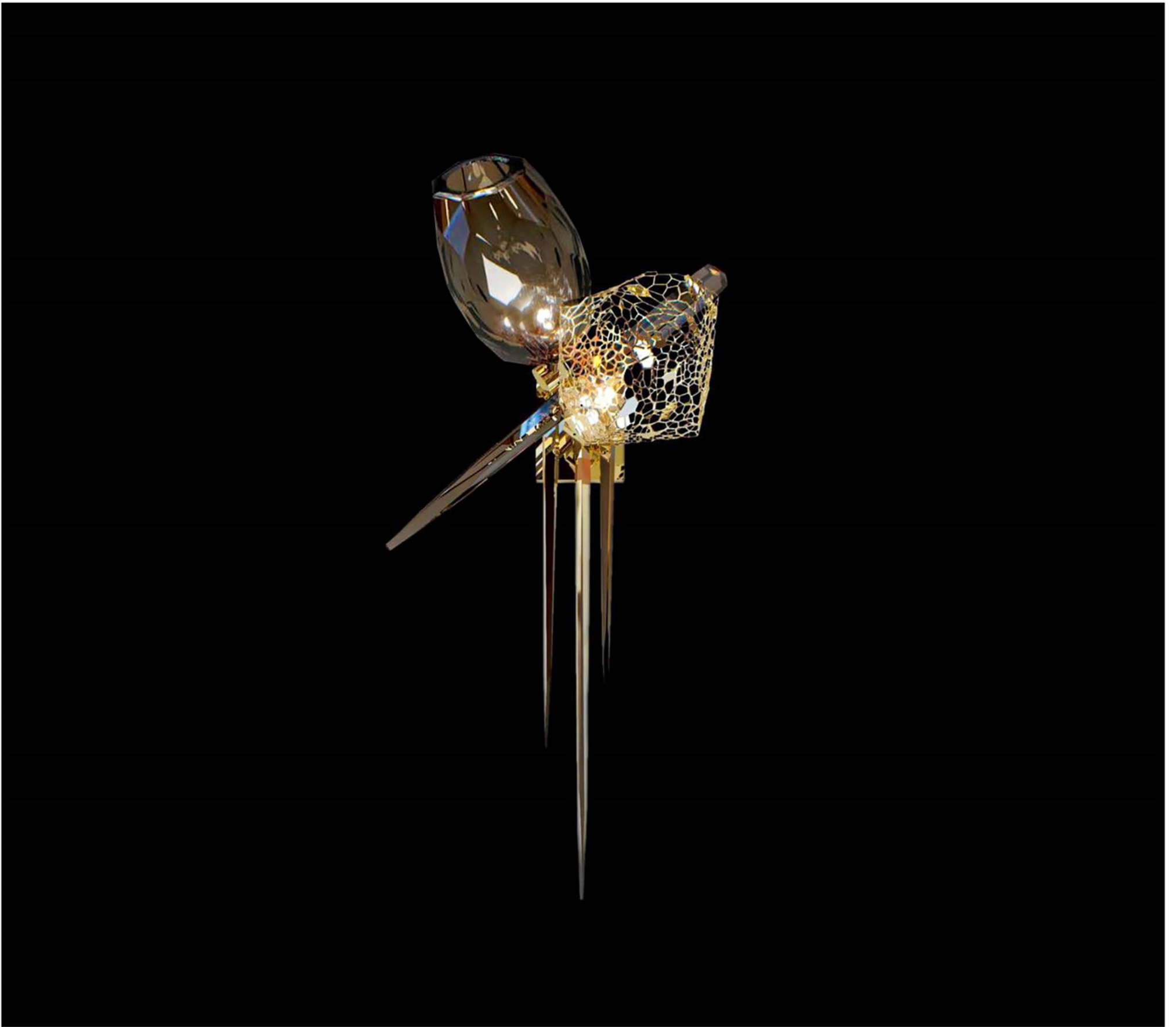


BRANCH D'OR SCONCE

Introducing you to our first 2023 design, the Branch D'or sconce . A namesake, organic piece instigated by Barlas Baylar. The Branch D'or embraces a sturdy plexi acrylic glass branch with alternating tinges of bronze, complete with custom bronze clasps. Barlas' inspiration stems from the fragility of nature, thus the Branch D'or is a testament to the greatest designer of them all, mother nature.

SPECS

Height: 28" Approx
Width: 4.5" Approx
Depth: 6" Approx



BRITANNICA SCONCE

A combination of magnificent proportions, consisting of a superior demonstration of craftsmanship that combines glass shards, hand-blown and carved, angular Murano glass globes, topped with a delicious bronze honeycomb design. A lighting masterpiece that boasts a myriad of varying incandescent reflections, set to uplift the ambiance of any surroundings it is placed in.

SPECS

Height: 36" Approx
Width: 20" Approx
Depth: 13" Approx



BRITANNICA SCONCE LARGE

A combination of magnificent proportions, consisting of a superior demonstration of craftsmanship that combines glass shards, hand-blown and carved, angular Murano glass globes, topped with a delicious bronze honeycomb design. A lighting masterpiece that boasts a myriad of varying incandescent reflections, set to uplift the ambiance of any surroundings it is placed in.

SPECS

Height: 60"Approx
Width: 30" Approx
Depth: 17" Approx



VALIANT SCONCE

Celebrate the exclusive meta-luxury of a pioneer in lighting fixtures with this illuminating artwork. Designed by Barlas Baylar, The Valiant Chandelier is an uncompromising representation of superior craftsmanship with hand-blown Murano glass lamps and solid polished bronze details that complement this exquisite work. Available in Bronze, Stainless Steel and as Sconce.

SPECS

Height: 26" Approx
Width: 14" Approx
Depth: 6" Approx



PANGEA SCONCE

Derived from the prehistoric supercontinent of the planet Earth, The Pangea Chandelier comprises of a surreal, horizontal layout of numerous interlocked geometrical, organic, circular pendants welded to form a seamless design, resulting in a bold and powerful, exquisitely unique work of art. Once lit, the fixture brings to life the intriguing natural live edges of this piece.

SPECS

Height: 28" Approx
Width: 16" Approx
Depth: 5.5" Approx



MOTHER SCONCE

A minimalist sculpture with filigree that dances with poise and bravado, and decorated with handmade organic chains elegantly fastened to form a bold sculpture. The Mother Chandelier features approximately 3 miles of faceted, jeweled chains draped individually over the stainless steel frame. The Mother Chandelier series is a design in which fashion and elegance meet function. Available in Bronze and Stainless steel.

SPECS

Small

Height: 18" Approx

Width: 10" Approx

Depth: 4" Approx

Large

Height: 30" Approx

Width: 10" Approx

Depth: 4.5" Approx

HUDSON
FURNITURE

NEW YORK CITY